

# **Xtra Final Software**

## ***XFS 2D Barcode***

**User Manual**

**Version 1.0**

<http://www.xtrafinal.com>

**Copyright © 2005-2006 Xtra Final Software, Inc. All rights reserved.**

## **XFS 2D Barcode 1.0 User Manual**

---

*This manual, as well as the software described in it, is furnished under license and maybe used or copied only in accordance with the terms of such license. The content of this manual is furnished for information use only, is subject to change without notice, and should not be construed as a commitment by Xtra Final Software, Inc. XFS assumes no responsibility or liability for any errors or inaccuracies that may appear in this documentation. Except as permitted by such license, no part of this publication may be reproduced, stored in a retrieval system, or transmitted, in any form or by any means, electronic, mechanical, recording, or otherwise, without the prior written permission of Xtra Final Software, Inc.*

*Any references to company names in sample templates are for demonstration purposes only and are not intended to refer to any actual organization.*

*All other trademarks are the property of their respective owners.*

### Introduction

*XFS 2D Barcode* is a powerful Barcode editor and Printer, which can generate **all** types of in common used 1D barcode, can support **any** paper of sales on the market, can import data from **every** database provider, **completely** WYSIWYG(What You See Is What You Get), **absolutely** easy to use.

*XFS 2D Barcode* works as a stand-alone program, and you can export Barcode images to other graphics formats such as GIF, JPG, BMP etc. Using copy/paste function, you can paste the Barcode image to your favorite graphics application for further edit.

### Major Features

*XFS 2D Barcode* includes many advanced features, such as:

- 2D Barcode: PDF417, Code16K
- New *XFS 2D Barcode* Sheet is a very strong power tool. You can specify any attributes of barcode you needed. Including Brand , Product Name , Symbology , Barcode value, Count that you want to generate barcode and Continuous. The most useful function is that you can specify your barcode if continuous, by this way, you can get a sequence of barcodes conveniently.
- Zoom In/Zoom out functions: you can view the Barcode in details and export it to other applications.
- Rotate left/right functions: you can change the rotate for view and printer.
- WYSIWYG: What You See Is What You Get.
- Inches or centimeters unite measurement: you can measurement the Barcode's width or height by inch or centimeter.
- The entire Barcode Label can be exported to images formats such as BMP, GIF, JPG, and PNG. The Barcode can also be copied to the Windows clipboard to allow other applications to use.
- Paper Template Support: Supports more than 200 label paper templates, and, you can add new barcode Label or delete barcode label if you wish.
- Import data from database: you can import data from any provider database.

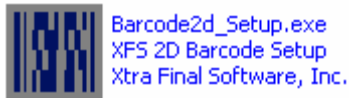
### System Requirements

- CPU: Requires at least a Pentium (or better) PC running Microsoft Windows 98SE, Windows Me, Windows 2000, Windows XP, or Windows 2003 or later. Windows 2000 and above operating systems are recommended.
- Printer: To print a quality Barcode, you need a dot matrix/ink jet/thermal/laser printer. For best quality and cost savings, we recommend you to use a laser printer to print Barcode images.
- Hard Drive Space: To download and install *XFS 2D Barcode* on your PC, you need at least 5 megabytes of free space.

### Installing

Before you can run *XFS 2D Barcode* you must first install it by running the Setup Program.

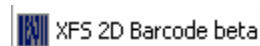
- 1) Download the setup file. You can download it on many websites.
- 2) Execute the Setup file. If you downloaded the setup file from many web site, the installation program is in EXE format. Run the program by double clicking the ASLGen.exe.



Follow the directions displayed by the Setup program and finish the installation.

### Uninstalling

If, for any reason, you need to remove the IBE Barcode Studio, you need to click the “Modify/Remove” button under the “IBE Barcode Studio” icon in the “Add/Remove Programs” in the control panel.



You can also do this by click the Uninstall *XFS 2D Barcode* in the start menu.

Follow the directions displayed by the Uninstall program and finish the removal.

### Registering

The software initially installed as a shareware version, you need to pay \$29.99 for the license. You can buy it click [here](#).

After buy it, the vendor will send the series number via Email.

Then you can update the demo to the full version; enter the registration code under the “Help->Register” menu.



### Getting Help

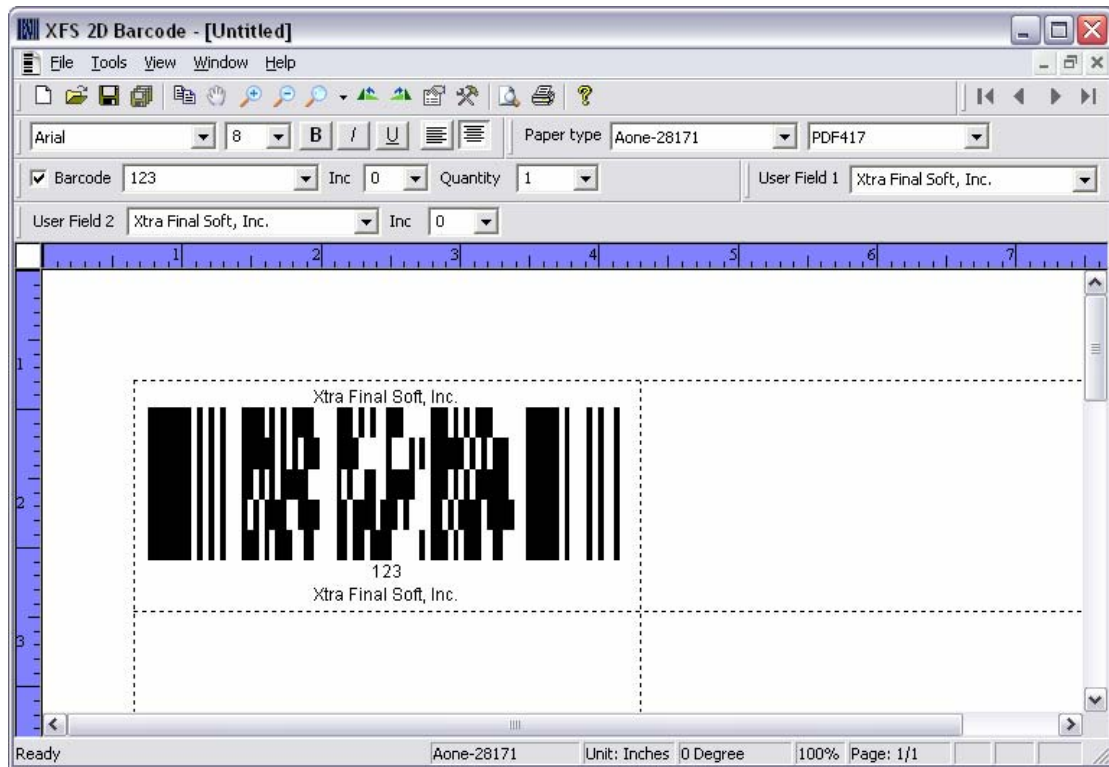
Please read the user manual that comes with this software for more usage and troubleshooting options.

To report problems and bugs, or to get technical support, please send an Email to [support@xtrafinal.com](mailto:support@xtrafinal.com).

### Running *XFS 2D Barcode*

Once installed, *XFS 2D Barcode* program group is added to your start menu, and a shortcut of *XFS 2D Barcode* is added to your desktop. To run *XFS 2D Barcode*, right click or double click this icon.

Once the program is launched, you will see the main program interface.



### Creating a New Barcode

You can create a new Barcode by pressing the “New” button on the toolbar, or selecting the “New” command under the “File” menu. In any case, the program shows the default Barcode Image. You can change the Barcode format(i.e., Symbology), text, user field1 and user field2 at any time.

### Save a Barcode file

You can save the details of your Barcode to a file on your floppy, flash ROM or hard disk using the “Save” command under the “File” menu or by pressing the “Save” button on the Toolbar. This brings up the Save File dialog box and you can give your Barcode file name.

### Saving a Barcode file under a different name

You can save the details of your Barcode to a file on your floppy, flash ROM or hard disk using the “Save as” command under the “File” menu This brings up the Save File dialog box and you can give your Barcode file name.

### Opening an existing Barcode file

Once a Barcode has been save to a file on disk, you can it using the “Open” command under the “File” menu or by pressing the “Open” button on the Toolbar. This command shows you the standard windows open dialog, and you can select the file to open.

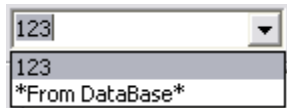
*XFS 2D Barcode* uses the “.xbc” file extension. Double –clicking on any file with that extension or open any these format files by the file explorer will launch the *XFS 2D Barcode* and open it.

### **Measuring the Barcode by ruler**

*XFS 2D Barcode* has both vertical and horizontal rulers. The horizontal ruler’s width depends on the paper’s width which you selected. For example, when you select a paper, the ‘paper size’ is ‘A4’, then the width of the horizontal ruler is 21 cm. Also you can view the rulers by Inches or centimeter unit by setting the “Measurement Unit” in the “Options” Dialog.

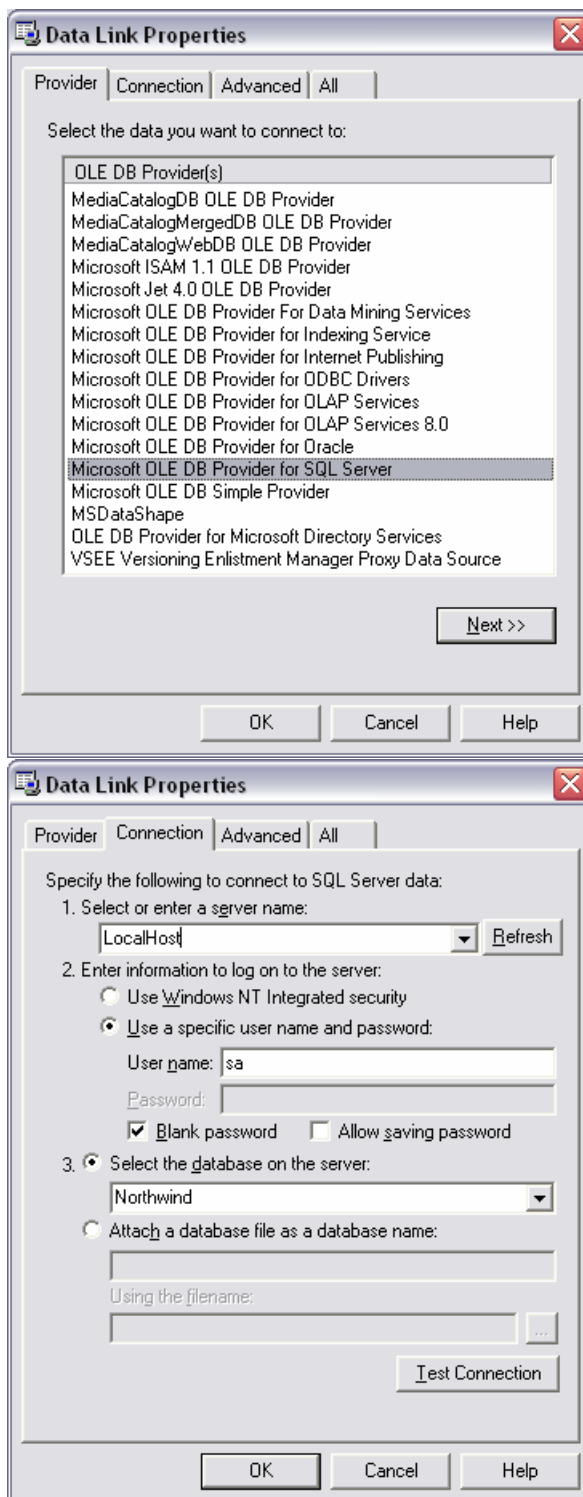
### **Generator the Barcode’s value or user field2 from database**

*XFS 2D Barcode* can import the value or user field2 from database’s field. You can select the “\*From Database” item in the “Value” ComboBox. This will bring up a “Database wizard” dialog.



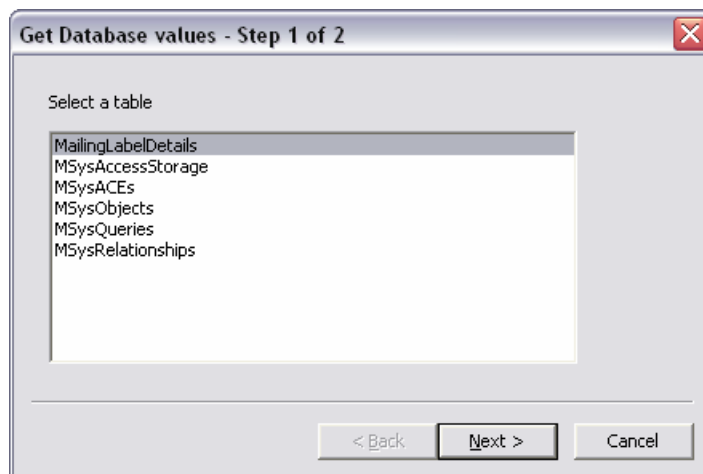
We will take the “Northwind” database as a example. In our example we will take the “OrderId” field which in the “Orders” table as the Barcode’s Text, and will take the “OrderDate” as the User field2’ s Text.

1.The first step is selecting database provider:



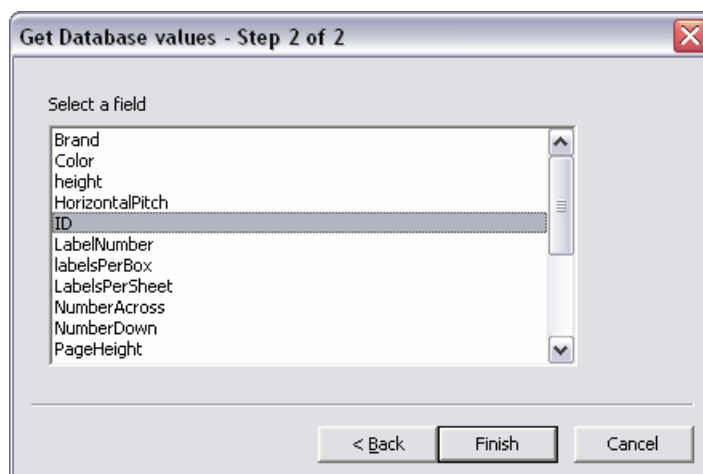
In our example we select the “Microsoft OLE DB Provider for SQL Server”. Also you can select any others database providers.

2.The second step is selecting database table:



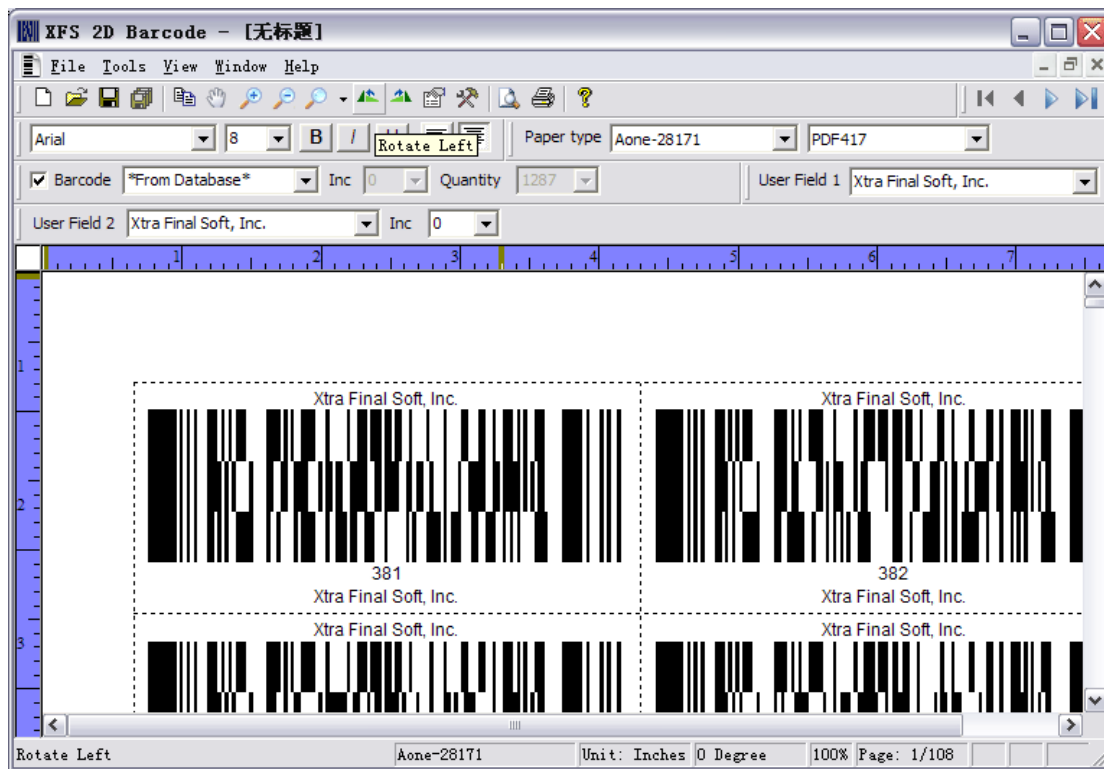
In our example we select the “Orders” table.

3.The last step is selecting field:



In our example we select the “OrderID” as a field for Barcode Text, select the “OrderDate” as a field for User Field2.

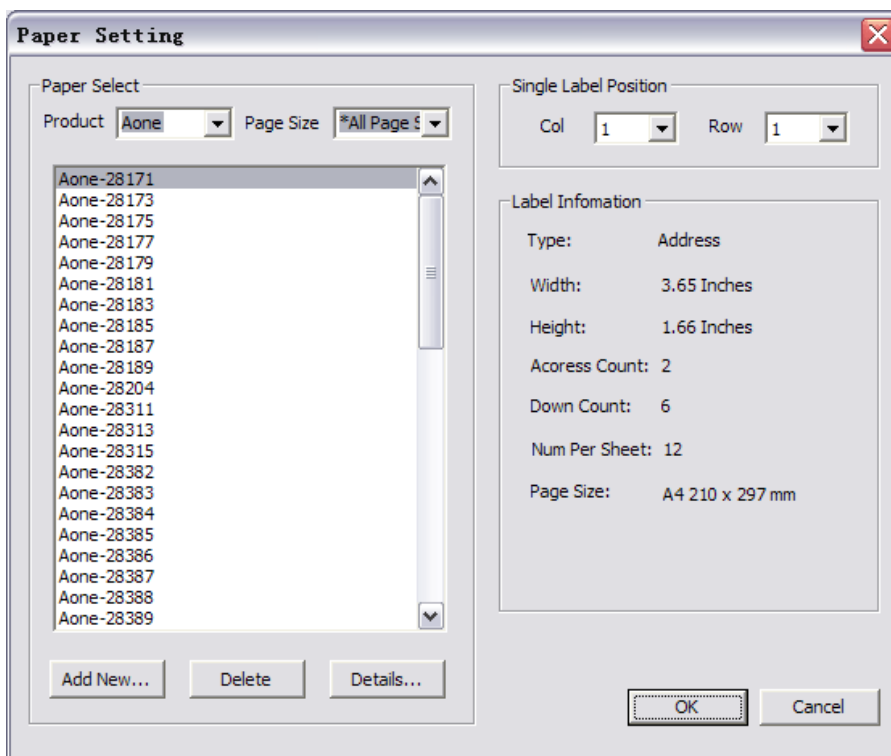
In the end, you should click the “Finish” button to finish the wizard, and generator the barcodes. Then you will see:



In this picture, you can see that the Barcode Text is corresponding with the database's field "OrderID" and the User Field2 corresponding with the database's field "OrderDate".

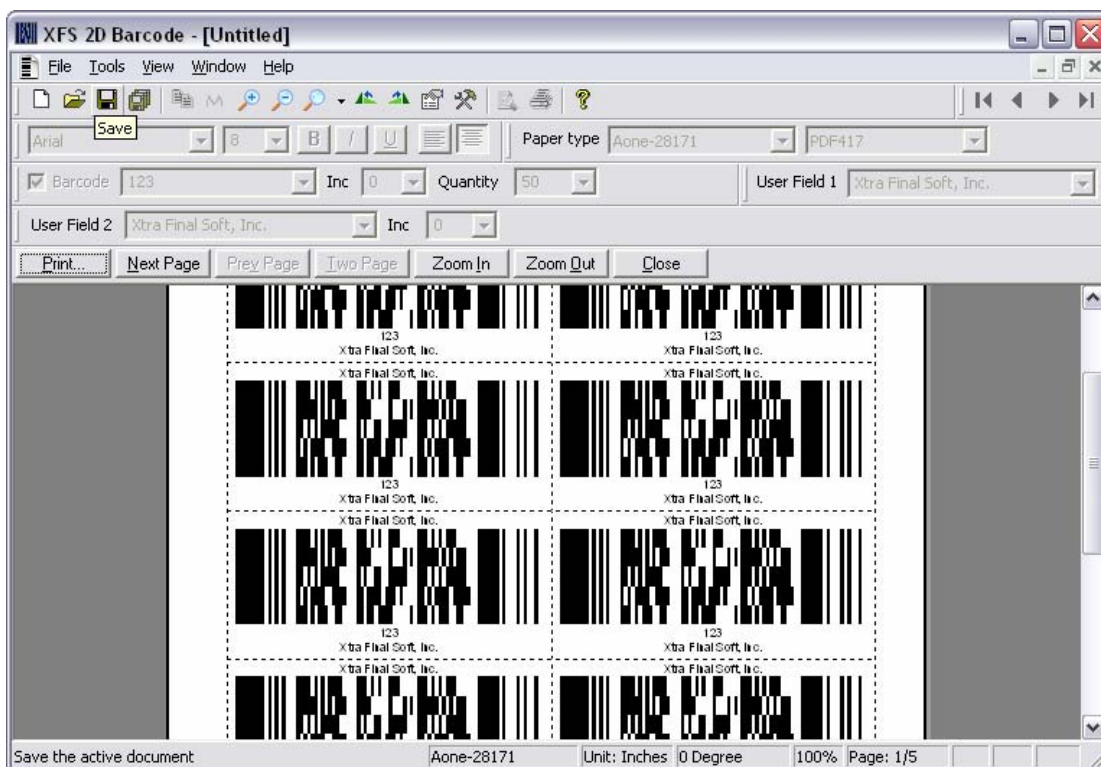
## Setting the Paper template

Pressing "Paper setting" command under the "Tools" menu will show you up the "Paper setting" dialog.



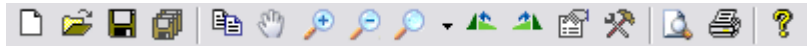
**Printer preview**

You can preview the Barcode(s) before printer it by pressing “Preview” command in “File” menu.



### Using the Toolbars

There are two Toolbars in the *XFS 2D Barcode*.



First one is the standard Toolbar, which is the mirror of the menu's commands.



Other is a simple Toolbar, which can page up, page down, page home and page end the document.

### Using the Rebars

#### Changing Font Typeface and Size

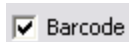
To changing the typeface of the font used in the Barcode, click on the down arrow of the font face picker. The font picker displays the font using text drawn with the font. You can also change the font size, and add bold, italic and underline to your text. We recommend you use font size 8 since it is standard size in all open systems.



*Note that the text attributes you select are applied to ALL text in the Barcode.*

#### Hiding the Text Form of the Barcode

You can hide the text form of the Barcode by un-checking the checkbox "Barcode Value". You can also enable the text form by checking the same checkbox. The text form of the Barcode is always shown under the actual Barcode.



#### Changing the Barcode Text

The combo box at the right side of the "Show Text" checkbox provides input for the encoded message, or so called Barcode text.



You can also set the Barcode to automatically increment (decrement) by one on the paper you print by choosing “+1” (“-1”) from the dropdown list on the right. To use this feature the last three character of the Barcode text must be numbers.

*Note: If the value is not a number, XFS 2D Barcode append a numeric string at end of the true value.*

XFS 2D Barcode can get the Barcode Text from database, it almost support the all the database providers. You can get the Barcode Text by finishing the wizard. See “Generator the Barcode’s value or user field2 from database” section.

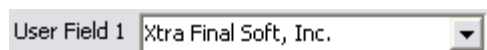
### Changing the Quantity of Barcode Labels

The “Quantity” combo box allows you to change the quantity of barcode labels printed, this option is only valid when the barcode increment is a non-zero value.

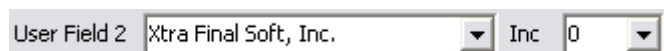
### Defining Optional User Field 1 and User Field 2

You can define two optional fields that will be included as part of the Barcode label print,

User Field 1: This is a text field which will be printed on top of the Barcode. This field does not support auto-increment.



User Field 2: This is a numeric field which will be printed on the bottom of the Barcode. This field supports auto-increment or auto-decrement if the data entered is numeric.



### Rotating Barcode

The Barcode image can be rotated in 90, 180 and 270 angles. Click the to rotate anticlockwise, and the to rotate clockwise. Image rotation can also be done via “Rotate Left” and “Rotate Right” under the “Tools” menu.



### Zooming In/ Out of the Barcode

The Zoom In/Out commands/buttons scale up/down the current view of the Barcode. They do not change the printed or exported Barcode size.



### Using Barcode Studio with Other Programs

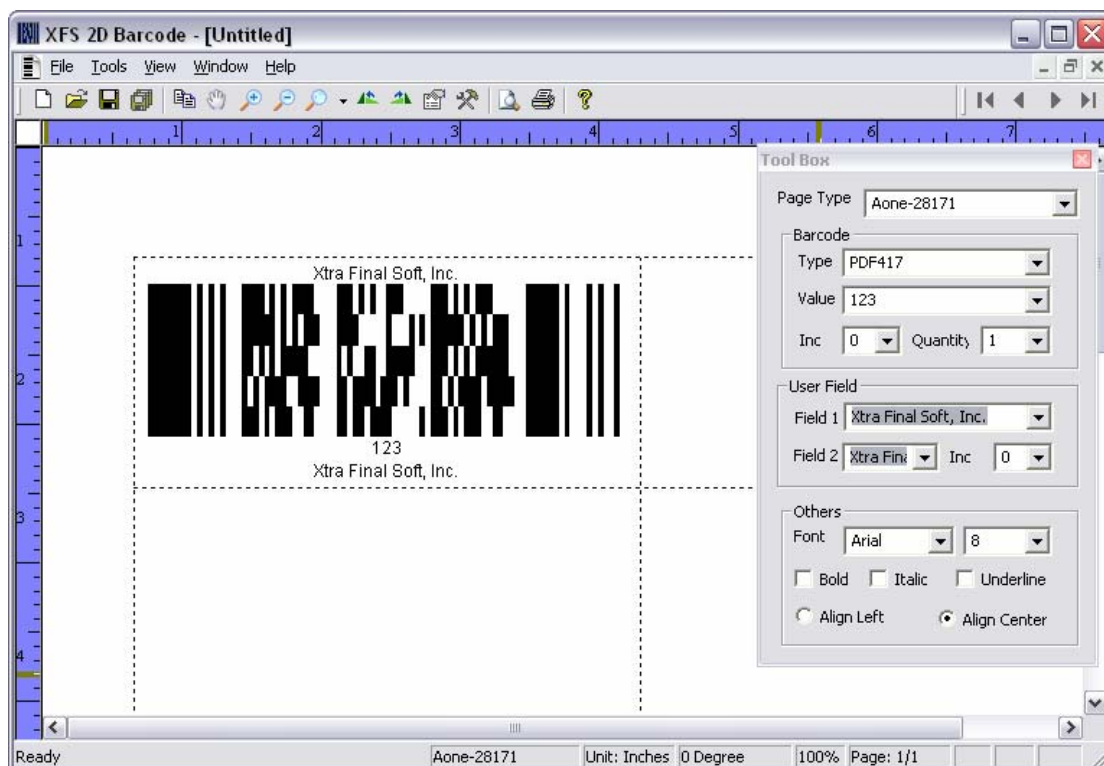
You can exchange data between *XFS 2D Barcode* and other programs using the clipboard and the standard edit command: "Copy". The clipboard is a place that Windows temporarily stores text, pictures and other data that have been copied so that they can be transferred to another document or program with a "Paste" command. Copy: The "Copy" command transfers all the Barcode image to the clipboard. If you use the Barcode image in another application, make sure that you work with physical size not pixels. Export: *XFS 2D Barcode* allows Barcode image to be exported to a variety of image formats, including JPG, BMP, GIF and PNG.

### Exporting Images

Choose "Export" from "File" menu, it pops up the standard file dialog. Choose the image type you want to export to, type the file name and press OK. The program converts the image into the format you specified and saves it to the disk

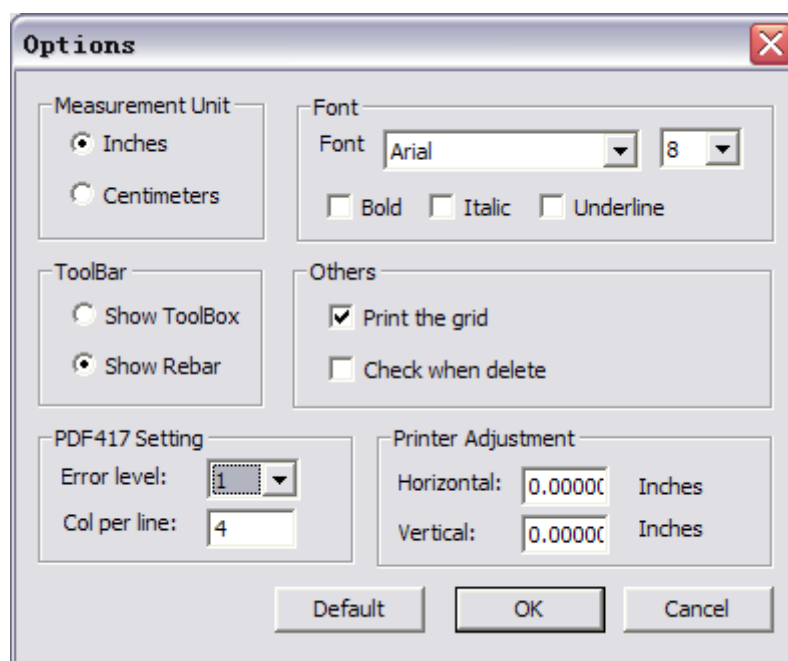
### Changing to the Toolbox edit mode

*XFS 2D Barcode* also can edit the Barcode by using the Toolbox mode, you can change to that mode by pressing the "Show Toolbox" in the view menu. Then you will see the form like this:



### Setting Options

Select “Tools->Options”, then the “Options Dialog” show up.



- ✧ Measurement Unit: setting the “Measurement Unit”, it can change the ruler’s Measurement unit.
- ✧ Font: setting the initial barcode’s value, field1 and field2’s font.
- ✧ ToolBar: setting the view mode of program.
- ✧ PDF417 Setting: setting the options for PDF417 only.
- ✧ Print Adjustment: Some Printer has excursion, then the result of printing will not the same with what your see. Then you should setting this “Adjustment”. Negative for left/up and plus for right/down.

### Supported Symbologies

XFS 2D Barcode currently supports tow major Barcode formats PDF417 and Code16K

Different symbologies have different character set and printing requirements. The program expects you input the data correctly You do not worry about check digits since this part is handled by the program automatically.

### PDF417

DF417 is a multi-row, variable-length symbology with high data capacity and error-correction capability. PDF417 has some unique features which makes it the widely used 2D symbology. A PDF417 symbol can be read by linear scanners, laser scanners or two-dimensional scanners. PDF417 is capable of encoding more than 1100 bytes, 1800 text characters or 2710 digits. Large data files can be encoded into a series of linked PDF417 symbols using a standard methodology referred to as Macro PDF417.

Character Set - All 128 ASCII characters, All 128 extended ASCII characters, 8-bit binary data;

Symbol Size - 3 to 90 rows, 90 to 583X in width

Bidirectional Decoding - Yes

Error Correction Level - 0 (no error correction) to 8 (the maximum error correction level)

Additional Options - Macro PDF417, Truncated PDF417, Global Label Identifier(GLI)

### **Code16K**

Code 16k is interesting because it's essentially a lot of reverse-video code128 rows stacked on top of one another, with some bearer bars, start/stop characters, a start symbol, padding, and check symbols thrown in.

A Code 16k block may contain up to 16 rows, separated by horizontal bearer bars. The top and bottom of the symbol have longer bearer bars to include a leading and trailing quiet zone. Each row has its own start and stop character and contains 5 symbols. PAD characters must be inserted to make a row contain 5 symbols if necessary.

## **Limited Use License Agreement**

### **XFS 2D Barcode Software**

---

This is a legal agreement between you as the end user, and Xtra Final Software(XFS). By installing the enclosed software you are agreeing to be bound by the terms of this agreement. If you do not agree to the terms of this agreement, promptly exit the install program and return all accompanying items (including written documentation) to the place you obtained them, for a full refund.

**GRANT OF LICENSE.** XFS grants you the right to use one copy of the enclosed software program (the SOFTWARE) on a single terminal connected to a single computer, with a single CPU, or mobile computer (laptop, notebook, portable, handheld PC, etc.). You may not network the SOFTWARE or otherwise use it on more than one computer or mobile computer at the same time.

**COPYRIGHT.** The SOFTWARE is the proprietary property of or under license to Xtra Final Software, Inc. and is protected by United States copyright laws and international treaty provisions. Therefore, you must treat the software like any other copyrighted material except that you may (a) make one copy of the SOFTWARE solely for backup or archival purposes, or (b) transfer the SOFTWARE to a single hard disk provided you keep the original solely for backup or archival purposes, or c) transfer the SOFTWARE to a single system, which includes a host computer with a hard disk, provided you keep the original solely for backup or archival purposes. The backup copy must include all copyright information contained in the original. You may not copy the written materials accompanying the SOFTWARE.

**OTHER RESTRICTIONS.** You may not rent or lease the SOFTWARE, but you may transfer the SOFTWARE and accompanying written materials on a permanent basis provided you retain no copies and the recipient agrees to the terms of this agreement. You may not reverse engineer, decompile or disassemble the SOFTWARE. If SOFTWARE is an update, any transfer must include the update and all prior versions. Your rights under this License will terminate automatically without notice from XFS if you fail to comply with any term(s) of the License.

### **Limited Warranty .**

**NO OTHER WARRANTIES.** XFS disclaims all other warranties, either express or implied, including but not limited to implied warranties of merchantability and fitness for a particular purpose, with respect to the SOFTWARE and the accompanying written materials. This limited warranty gives you specific legal rights. You may have other which vary from state to state.

**NO LIABILITY FOR CONSEQUENTIAL DAMAGES.** In no event shall XFS or its suppliers be liable for any damages whatsoever (including, without limitation, damages for loss of business profits, business interruption, loss of business information, or other pecuniary loss) arising out of the use of or inability to use the SOFTWARE, even if XFS has been advised of the possibility of such damages. Because some states do not allow the exclusion or limitation of liability, for consequential or incidental damages, the above limitation may not apply to you.

**EXPORT LAW ASSURANCES.** You may not use or otherwise export or reexport the SOFTWARE except as authorized by United States law and laws of the jurisdiction in which the SOFTWARE was obtained. In particular, but without limitation, none of the SOFTWARE may be used or otherwise exported or reexported (a) into (or to a national or resident of) a United States embargoed country or (b) to anyone on the U.S. Treasury Department's list of Specially Designated Nationals or the U.S. Department of Commerce's Table of Denial Orders. By using the SOFTWARE, you represent and warrant that you are not located in, under control of, or a national or resident of any such country or on any such list.

**CONTROLLING LAW AND SEVERABILITY.** This License shall be governed by the laws of the United States and the State of California. If for any reason a court of competent jurisdiction finds any provision, or portion thereof, to be unenforceable, the remainder of this License shall continue in full force and effect.

